



EyeMag Loupes
Seeing is believing



We make it visible.



EyeMag Medical Loupes

Precision at first sight

EyeMag® Medical Loupes from Carl Zeiss combine high-quality optics with a sophisticated design. Precision optics ensure clear visualization of anatomical micro-structures. The result: increased efficiency and elevated levels of care. The large selection of working distances and magnification levels enable you to select the right loupes for your specific application needs. This product offering flexibility allows you to always work in an ergonomic and comfortable position, resulting in reduced fatigue and eyestrain. In addition to their elegant and functional design, EyeMag loupes are intuitive and easy to use.



The EyeMag product line was developed in close cooperation with surgeons, ensuring a solution that is efficient, reliable, and comfortable for everyday use.



EyeMag Smart

More than meets the eye

With a 2.5x magnification, EyeMag Smart loupes are ideal for applications where a large field of view is a requirement. See the whole picture with stunning detail. Its intuitive operation makes EyeMag Smart particularly attractive for first-time users and where fast and easy operation counts.



EyeMag Pro F and EyeMag Pro S

Professional optics for higher visualization standards

EyeMag Pro is the loupe of choice for those medical professionals with high magnification requirements. The magnification levels of the optical systems range from 3.2x to 5x. Two carrier system options are available: titanium eyeglass frame (F) or comfortable headband (S).

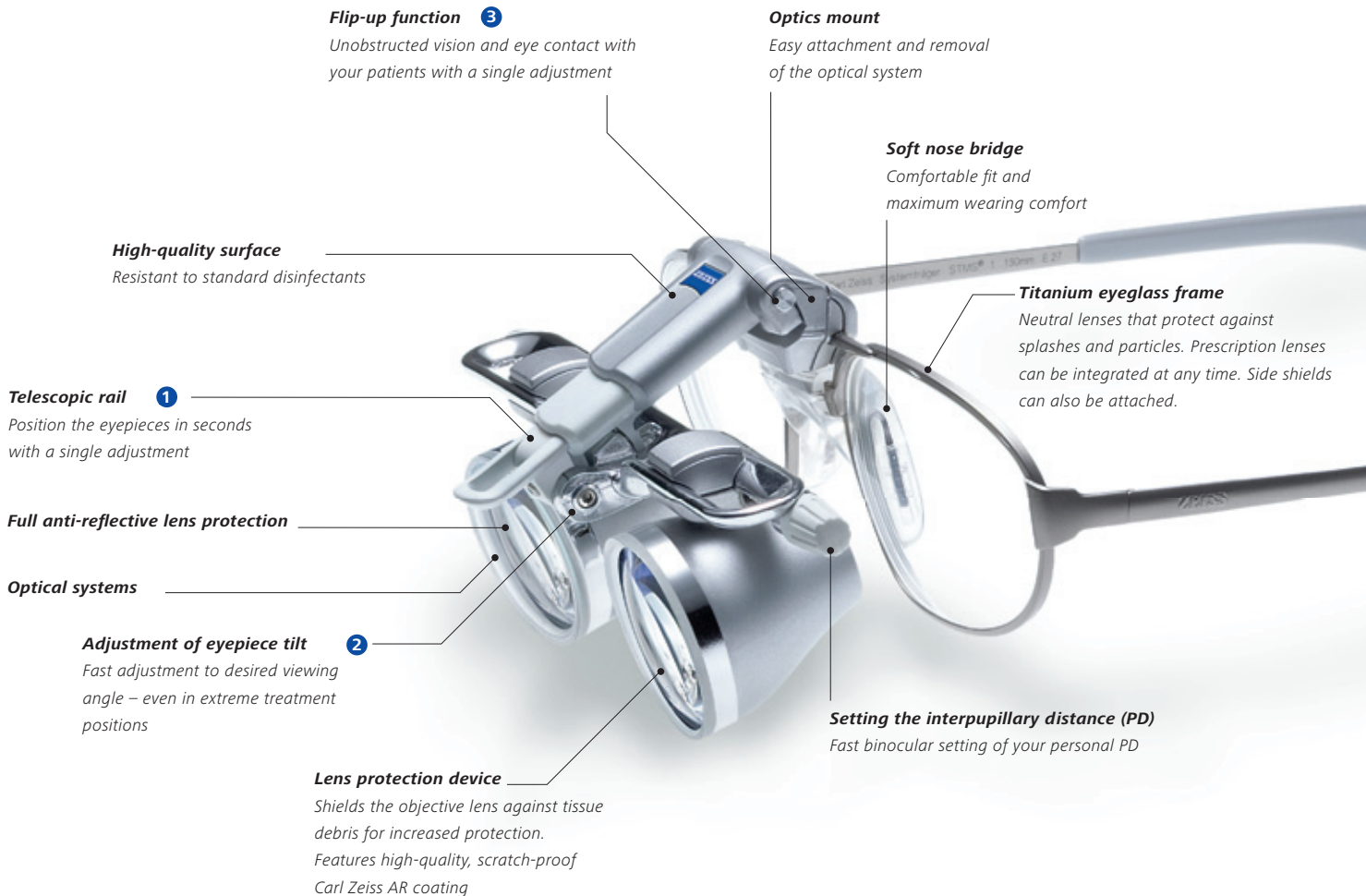
EyeMag Smart

See the whole picture with stunning detail

With 2.5x magnification, EyeMag Smart loupes provide large fields of view, enabling you to always see the whole picture. Choose from five configurations ranging from 300 to 550 mm depending on your individual working distance. The loupe system, delivered on a lightweight titanium eyeglass frame, is easy and intuitive to operate, making it particularly attractive to first-time users.

Optical quality in an elegant design

The optical quality of EyeMag Smart loupes delivers precise images with good color fidelity extending to the peripheral zones. Excellent depth of field ensures clear visualization of anatomical structures in deeplying channels. The large fields of view provide an optimized view of the working area. In addition to optical quality, the compact loupes feature an attractive, modern design.



Ready for use in seconds

The range of tilt and angle of declination settings make EyeMag Smart loupes particularly quick and intuitive to operate. The loupes can be adjusted to meet your treatment needs in a matter of seconds. You can position the distance of the eyepieces and change the tilt angle quickly and easily with a single adjustment. The flip-up function facilitates unobstructed vision and eye contact with the patient, enabling you to concentrate on what is most important: the treatment of the patient.

Perfectly matched – work in comfort

EyeMag Smart loupes can be quickly adjusted to the requirements of the treatment position. This flexibility permits you to always achieve a comfortable, correct seated position allowing you to work ergonomically, preventing back and neck pain. The choice of five working distances facilitates the ideal loupes configuration for your individual requirements. The comfortable titanium eyeglass frame, with soft nose bridge and elastic headband, ensures a proper fit.

Elastic headband

Optimal weight distribution ensures a perfect fit



EyeMag Smart

Working distance (mm)	300	350	400	450	550
Working distance (inch)	12	14	16	18	22
Magnification	2.5x	2.5x	2.5x	2.5x	2.5x
Field of view (mm)	67	77	86	96	115



A smart combination

Precision optics and stylish design

The EyeMag Smart sports frame loupes deliver style and functionality. A smart choice when a large field of view is desired, they provide 2.5x magnification and offer the optical excellence and precision you expect from Carl Zeiss.

Style, function and comfort

The curved lens design of the EyeMag Smart sports frame not only gives it a modern look, but also serves to protect the wearer from splash and debris. Lightweight and equipped with an adjustable headband, the sports frame feels as good as it looks. The compact size of the optical system and soft nose pads help ensure comfort even during longer procedures. Like the traditional EyeMag Smart on the titanium frame, the flip-up configuration enables wearers to move the loupe attachment out of their line of sight with a single hand motion for instant eye contact with patients and colleagues.



High-quality optics

Good image quality and color fidelity give you a clear picture of anatomical structures.



Flip-up function

A simple adjustment enables unobstructed vision and eye contact with others.

On the same wavelength as modern therapies

Detailed vision and optimal protection for laser procedures

Minimally invasive laser therapies are gaining increasing importance in everyday medicine. EyeMag Smart ensures perfect visibility and optimal protection during the procedure.

EyeMag Smart Loupes with laser protection offer the high-quality laser protection and optical brilliance you need to perform laser treatment with maximum safety and precision.

The combination of laser protection eyeglasses and eyepiece protection meets all laser safety requirements stipulated by the European standard EN 207.

- Optimal protection*: eyeglass lenses protect the user against wavelengths of diode and Nd:YAG lasers
- Bright filters: for very good color vision
- Curved lenses: prevent lateral incidence of the laser beam

Laser protection for eyepieces
Supplements the protection against laser irradiation



Sports frame with integrated laser protection
Optimally blocks the wavelengths of diode lasers (805-1030 nm) and Nd:YAG lasers (1030-1064 nm)



Flexible

If no laser protection is needed, the sports frame with laser protection can simply be replaced with a transparent eyeglass frame from the EyeMag Smart line.

*100% laser protection is only guaranteed if eyepiece protection and laser safety eyewear are used!
More information about laser protection at www.meditec.zeiss.com/EyeMagSmart-laserprotection

EyeMag Pro

An advanced visualization system

EyeMag Pro is the right loupe system for users with higher magnification demands. It is available in a wide range of magnification levels and working distances, enabling you to select loupes tailored to your individual needs.

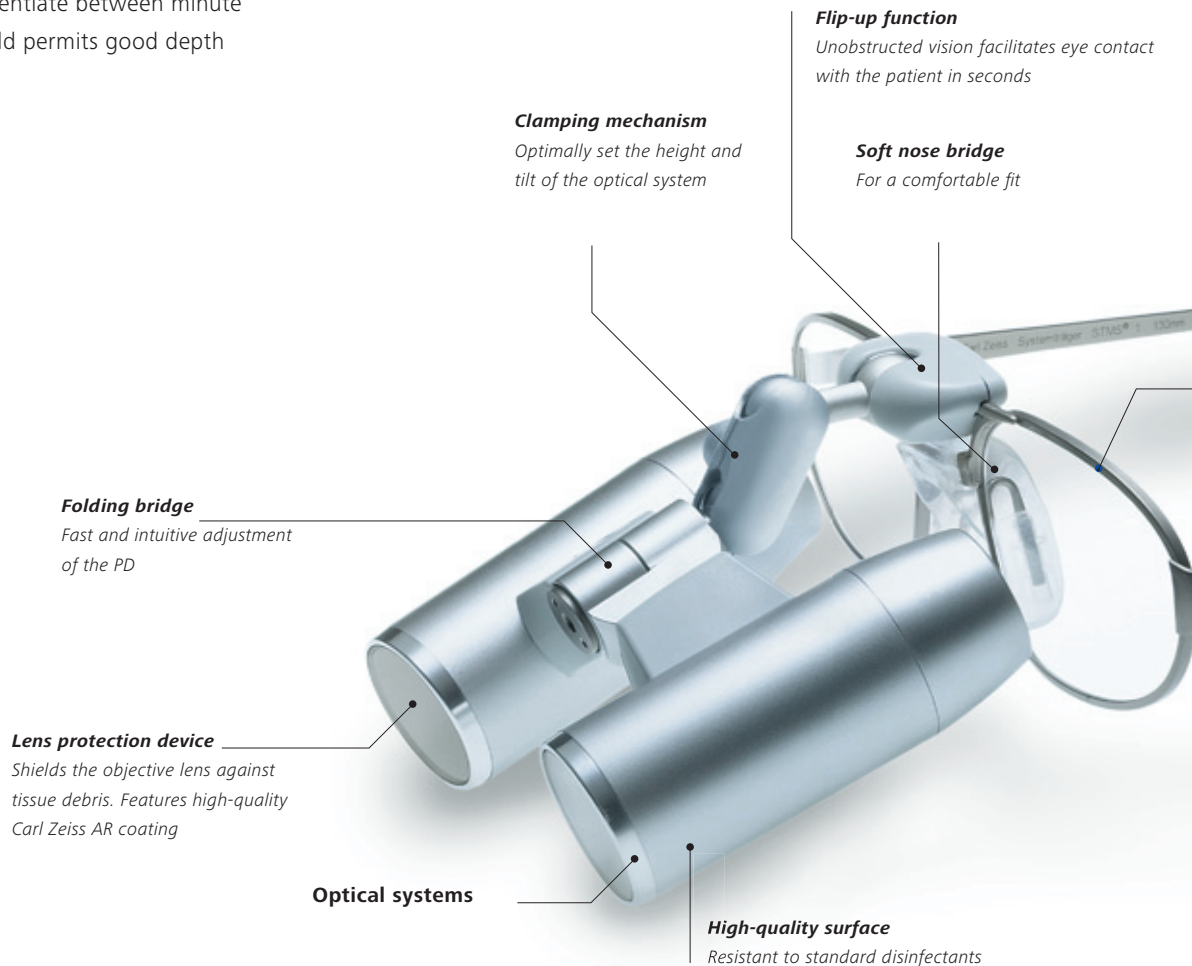
Choose a magnification level from 3.2x to 5x and working distances from 300 to 500 mm. For the carrier system, you can select a titanium eyeglass frame (EyeMag Pro F) or a headband system (EyeMag Pro S).

Capture all the details

The brilliant optics from Carl Zeiss integrated into EyeMag Pro F and EyeMag Pro S loupe systems offer precise vision. EyeMag Pro loupes generate a high-contrast stereoscopic image, thus enabling you to recognize and differentiate between minute structures. The depth of field permits good depth orientation.

Tailored to your individual needs

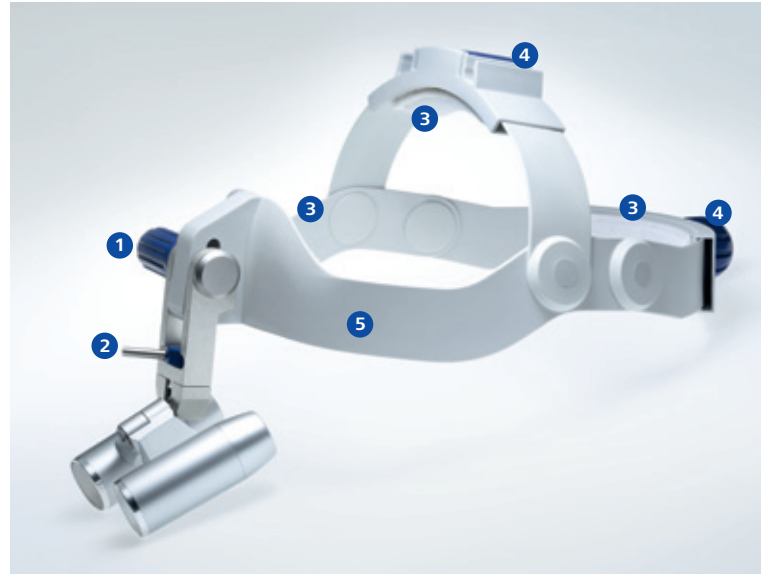
You can select the carrier system that fulfills your individual preferences. With the titanium frame, EyeMag Pro loupes offer a carrier system into which prescription lenses can be easily integrated. The soft nose bridge and adjustable headband enable a perfect, comfortable fit. Over longer wearing periods, the headband on the EyeMag Pro S loupes ensures comfortable weight distribution. The personal setting options on the EyeMag Pro F and EyeMag Pro S systems facilitate an ergonomically correct treatment position with every tilt angle.



A wide range of working distances ensures application flexibility for most medical disciplines and accommodates many individual requirements. This comprehensive offering allows you to always work in comfort.

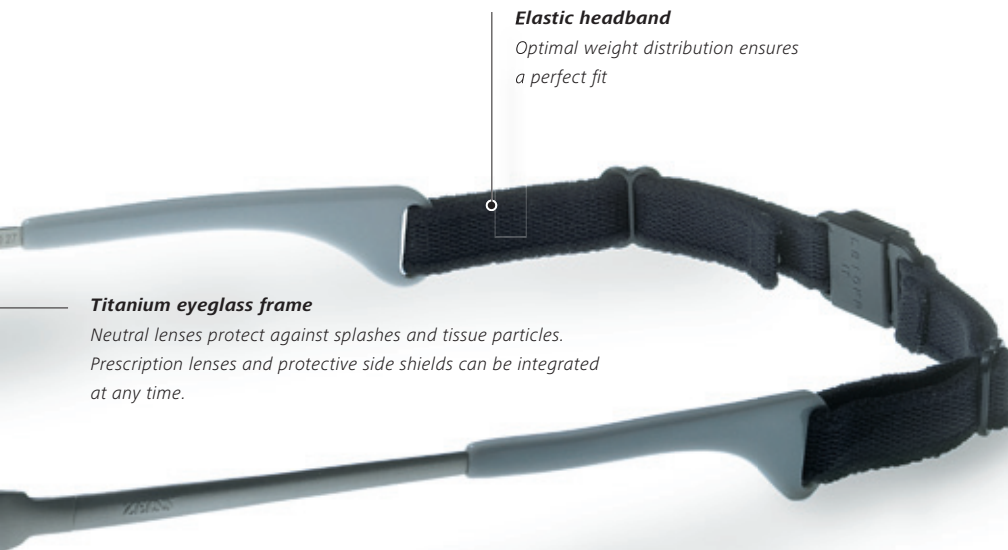
Focus on the patient

The numerous adjustment possibilities on EyeMag Pro loupes let you focus on the patient treatment. The tilt angle can be easily adjusted to the necessary treatment position. The unique optical system on the EyeMag Pro loupes features a folding bridge that allows you to intuitively set your personal interpupillary distance.



EyeMag Pro S Loupes

- 1 Vertical adjustment**
Fast and easy positioning of the optical system
- 2 Locking lever**
Optimally set the eyepiece tilt to any desired viewing angle – even in extreme treatment positions
- 3 Washable textile pads**
Maximum wearing comfort – easy removal and cleaning
- 4 Adjusts to the shape of your head**
Quick and easy adjustment for individual needs
- 5 Headband system**
Provides even weight distribution and comfort



Elastic headband
Optimal weight distribution ensures a perfect fit

Titanium eyeglass frame
Neutral lenses protect against splashes and tissue particles. Prescription lenses and protective side shields can be integrated at any time.

EyeMag Pro F and EyeMag Pro S

Working distance (mm)	300		350		400		450		500	
Working distance (inches)	12		14		16		18		20	
Magnification	4x	5x	3.6x	4.5x	3.5x	4.3x	3.3x	4x	3.2x	4x
Field of view (mm)	56	44	71	56	86	68	100	81	115	93

Quickly and easily

select the correct loupe design and configuration

EyeMag Smart



Selection of the loupe model

EyeMag Smart

- Flip-up loupe system featuring a Galilean design
- 2.5x magnification is suitable for beginners and applications with minor requirements on the magnification
- Large fields of view for optimum visualization of the surgical field
- Easy, intuitive operation – ready for use in seconds
- Attractive, compact design
- Available with three different carrier systems: EyeMag Smart with titanium eyeglass frame, EyeMag Smart with sports frame and EyeMag Smart with laser protection

EyeMag Pro F



EyeMag Pro F and EyeMag Pro S

- Flip-up loupe system featuring a Kepler design
- For users with high magnification demands
- Large selection of different models available in different combinations of magnification levels and working distances
- Available with two different carrier systems: EyeMag Pro F with titanium eyeglass frame and EyeMag Pro S with headband system



Measure your working distance

Measure the typical distance from your eyes to the object of interest to determine the preferred working distance.



Select the right combination

Determine the combination of magnification and field of view that is preferred for the selected working distance – the higher the magnification, the smaller the field of view. An overview of all fields of views and magnification levels is available on pages 12/13.

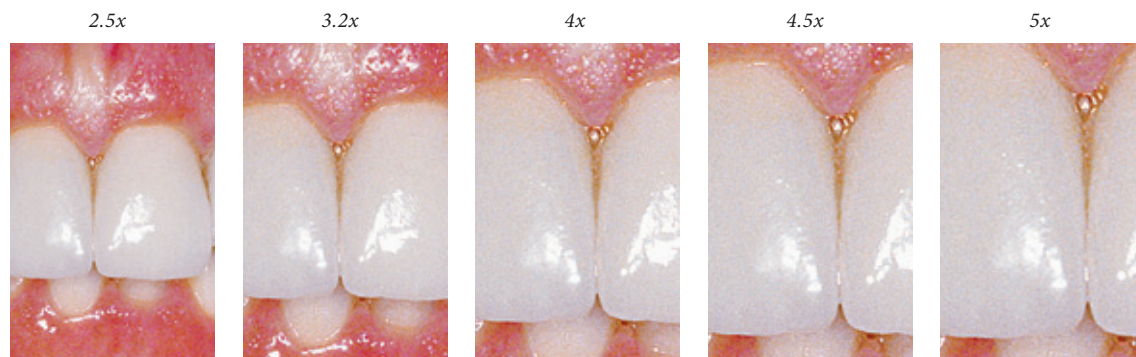


Photo: Klaus Ernst, Stuttgart, Germany



The optical systems – fields of view (actual size)

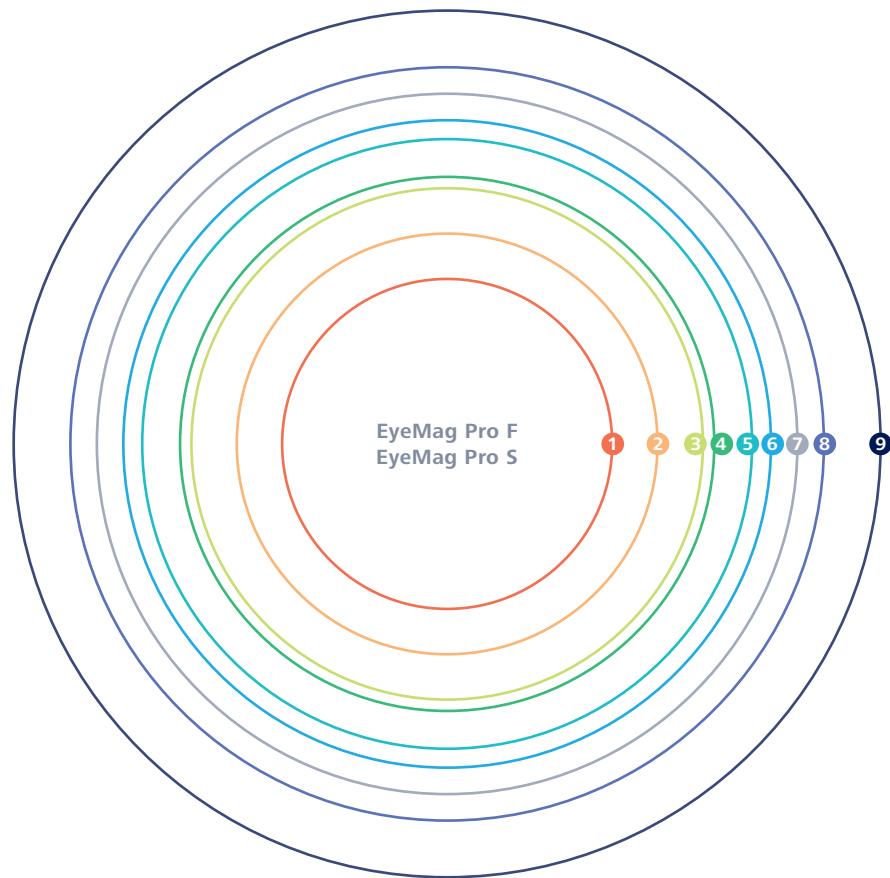
The following fields of view are possible depending on the working distance and the desired magnification. These determine the selection of your individual loupes.



EyeMag Smart

EyeMag Smart – optical systems

Working distance (mm)	300	350	400	450	550
Working distance (inches)	12	14	16	18	22
Magnification	2.5x	2.5x	2.5x	2.5x	2.5x
Field of view (mm)	67	77	86	96	115
	1	2	3	4	5



EyeMag Pro

EyeMag Pro – optical systems

Working distance (mm)	300		350		400		450		500	
Working distance (inches)	12		14		16		18		20	
Magnification	4x	5x	3.6x	4.5x	3.5x	4.3x	3.3x	4x	3.2x	4x
Field of view (mm)	56	44	71	56	86	68	100	81	115	93
	2	1	4	2	6	3	8	5	9	7

EyeMag loupes

It's time for a new perspective

EyeMag Smart

Flip-up medical loupes with 2.5x magnification on a titanium eyeglass frame



Standard delivery package of EyeMag Smart with titanium frame

Optical system	Optical system featuring a Galilean design
System carrier	Titanium eyeglass frame Sizes: S, M, L with elastic headband and soft nose bridge
Lens protection device	Shields the objective lens against tissue debris Features high-quality, scratch-proof Carl Zeiss AR coating
Contact guard	Sterilizable to reliably swing loupes up and down
Side shields for EyeMag Smart	Side protection against splashes and particles
Soft case	High-quality, shock-proof protection for your loupes and accessories
Compliance	CE

Standard delivery package of EyeMag Smart with sports frame

Optical system	Optical system featuring a Galilean design
System carrier	Sports frame with elastic headband and soft nosepiece
Lens protection device	Shields the objective lens against tissue debris Features high-quality, scratch-proof Carl Zeiss AR coating
Contact guard	Sterilizable to reliably swing loupes up and down
Soft case	High-quality, shock-proof protection for your loupes and accessories
Compliance	CE

Standard delivery package of EyeMag Smart with laser protection

Optical system	Optical system featuring a Galilean design
System carrier	Sports frame featuring laser protection and eyepiece protection, with elastic headband and soft nosepiece
Lens protection device	Shields the objective lens against tissue debris Features high-quality, scratch-proof Carl Zeiss AR coating
Contact guard	Sterilizable to reliably swing loupes up and down
Soft case	High-quality, shock-proof protection for your loupes and accessories
Compliance	CE

EyeMag Pro F

EyeMag Pro S

Flip-up medical loupes with 3.2x to 5x magnification and titanium eyeglass frame (EyeMag Pro F) or headband system (EyeMag Pro S)



Standard delivery package

Optical system	Optical system featuring a Kepler design
System carrier	Titanium eyeglass frame (EyeMag Pro F) Sizes: S, M, L with elastic headband and soft nose bridge or Headband system (EyeMag Pro S). Size of the headband can be personally adjusted
Lens protection device	Protects against tissue debris with Carl Zeiss AR coating
Contact guard	Sterilizable to reliably swing loupes up and down
Side shields for EyeMag Pro F	Side protection against splashes and particles
Soft case	High-quality, shock-proof protection for your loupes and accessories
Compliance	CE

The moment medical technology leads
to something very human: patients smile again.
This is the moment we work for.

// CONFIDENCE
MADE BY CARL ZEISS

Your local contact:

Argentina

Carl Zeiss Argentina S.A.
Calle Nahuel Huapi 4015 / 25
C1430 BCO Buenos Aires
Argentina
Phone: +54 11 45 45 66 61
bruzzi@zeiss.com.ar

Australia

Carl Zeiss Pty Ltd
Tenancy Office 4, Level 1
40-52 Talavera Road
North Ryde NSW 2113
Australia
Phone: +61 2 9020 1333
med@zeiss.com

Austria

Carl Zeiss GmbH
Laxenburger Str. 2
1100 Vienna
Austria
Phone: +43 1 79 51 80
austria@zeiss.org

Belgium

Carl Zeiss NV-SA
Ikarooslaan 49
1930 Zaventem
Belgium
Phone: + 32 2 719 39 11
info@zeiss.be

Brazil

Carl Zeiss do Brasil Ltda.
Av. Nações Unidas, 21711
CEP04795-100 São Paulo
Brazil
Phone: +55 11 5693 5521
medbrasil@zeiss.org

Canada

Carl Zeiss Canada Ltd.
45 Valleybrook Drive
Toronto, ON M3B 2S6
Canada
Phone: +1 800 387 8037
czcmed@zeiss.com

China

Carl Zeiss Shanghai Co. Ltd.
1/f., Ke Yuan Building
11 Ri Yin Nan Road
Waigaoqiao Free Trade Zone
2005 Yang Gao Bei Road
Shanghai 200131
China
Phone: +86 21 5048 17 17
sro@zeiss.com.cn

Czech Republic

Carl Zeiss spol. s r.o.
Radlická 14/3201
150 00 Prague 5
Czech Republic
Phone: +420 233 101 221
zeiss@zeiss.cz

France

Carl Zeiss Meditec France SAS
60, route de Sartrouville
78230 Le Pecq
France
Phone: +33 1 34 80 21 00
med@zeiss.fr

Germany

Carl Zeiss Meditec VG mbH
Carl-Zeiss-Strasse 22
73447 Oberkochen
Germany
Phone: +49 7364 20 6000
vertrieb@meditec.zeiss.com
Surgical Ophthalmology:
Phone: +49 800 470 50 30
iol.order@meditec.zeiss.com

Hong Kong

Carl Zeiss Far East Co. Ltd.
Units 11-12, 25/F
Tower 2, Ever Gain Plaza
No. 88 Container Port Road
Kwai Chung
Hong Kong
Phone: +852 2332 0402
cufe@zeiss.com.hk

India

Carl Zeiss India Pvt. Ltd.
Plot No.3, Jigani Link Road
Bommasandra Industrial Area
Bangalore - 560 099
India
Phone: +91 80 4343 8000
info@zeiss.co.in

Italy

Carl Zeiss S.p.A.
Viale delle Industrie 20
20020 Arese (Milan)
Italy
Phone: +39 02 93773 1
infomed@zeiss.it

Japan

Carl Zeiss Meditec Japan Co. Ltd.
Shinjuku Ku
Tokyo 160-0003
22 Honchio-Cho
Japan
Ophthalmic instruments:
Phone: +81 3 33 55 0331
medsales@zeiss.co.jp
Surgical instruments:
Phone: +81 3 33 55 0341
cmskoho@zeiss.co.jp

Malaysia

Carl Zeiss Sdn Bhd.
Lot2, Jalan 243/51 A
46100 Petaling Jaya
Selangor Darul Ehsan
Malaysia
Phone: +60 3 7877 50 58
malaysia@zeiss.com.sg

Mexico

Carl Zeiss de México S.A. de C.V.
Avenida Miguel Angel de Quevedo
496
04010 Mexico City
Mexico
Phone: +52 55 59 99 0200
cz-mexico@zeiss.org

Netherlands

Carl Zeiss B.V.
Trapezium 300
Postbus 310
3364 DL Sliedrecht
Netherlands
Phone: +31 184 43 34 00
info@zeiss.nl

New Zealand

Carl Zeiss (N.Z.) Ltd.
15B Paramount Drive
P.O. Box 121 - 1001
Henderson, Auckland 0650
New Zealand
Phone: +64 9 838 5626
med@zeiss.com

Poland

Carl Zeiss sp. z o.o.
ul. Lopuzanska 32
02-220 Warsaw
Poland
Phone: +48 22 858 2343
medycyna@zeiss.pl

Singapore

Carl Zeiss Ptd. Ltd.
50 Kaki Bukit Place
Singapore 415926
Singapore
Phone: +65 6741 9600
info@zeiss.com.sg

South Africa

Carl Zeiss (Pty.) Ltd.
363 Oak Avenue
Ferndale
Randburg 2194
South Africa
Phone: +27 11 886 9510
info@zeiss.co.za

South Korea

Carl Zeiss Co. Ltd.
Seoul 121-828
Mapo-gu
141-1, Sangsu-dong
2F, BR Elitel Bldg.
South Korea
Phone: +82 2 3140 2600
korea@zeiss.co.kr

Spain

Carl Zeiss Meditec Iberia S.A.U.
Ronda de Poniente, 15
Tres Cantos
28760 Madrid
Spain
Phone: +34 91 203 37 00
info@zeiss.es

Sweden

Carl Zeiss AB
Tegeluddsvaegen 76
10254 Stockholm
Sweden
Phone: +46 84 59 25 00
info@zeiss.se

Switzerland

Carl Zeiss AG
Feldbachstrasse 81
8714 Feldbach
Switzerland
Phone: +41 55 254 7534
info@zeiss.ch

Thailand

Carl Zeiss Thailand
Floor 8, Thosapol Land Building 2
230 Ratchadapisek Road
Huaykwang, Bangkok 10310
Thailand
Phone: +66 2 2 74 06 43
thailand@zeiss.com.sg

United Kingdom

Carl Zeiss Ltd.
509 Coldhams lane
Cambridge
CAMBS
CB1 3JS,
United Kingdom
Phone: +44 1707 871200
info@zeiss.co.uk

United States of America

Carl Zeiss Meditec, Inc.
5160 Hacienda Drive
Dublin, CA 94568
USA
Phone: +1 925 557 4100
info@meditec.zeiss.com



Carl Zeiss Meditec AG

Goeschwitzer Strasse 51–52

07745 Jena

Germany

www.meditec.zeiss.com/loupes

www.meditec.zeiss.com/contacts

US_30_010_01891 Printed in Germany AW-CZ-VIII/2012 To EyeMag is a registered trademark of Carl Zeiss.
The contents of the brochure may differ from the current status of approval of the product in your country. Please contact our regional representative for more information.
Subject to change in design and scope of delivery and as a result of ongoing technical development. Printed on elemental chlorine-free bleached paper.
© 2012 by Carl Zeiss Meditec AG. All copyrights reserved.