

NEW

Helios 680

· DIGITAL INTRAORAL SCANNER ·

HELIOS 680, MORE THAN A SCANNER.



Eighteeth



FLAGSHIP-LEVEL UPGRADE



Performant

- 16μm intraoral full-arch precision, 8μm single tooth precision, 30fps frame rate
- Enjoy the smooth precision of scanning



Renewed

- Graceful curves with refined matte finish



Lighter

- 161.5g total weight, lighter than ever and easy to hold



Cloud-upgraded

- Powered by AWS cloud with worldwide coverage, lower latency & greater reliability
- Enhanced performance for efficient cloud management



Real

- 24bit color bits, feel the real color of teeth
- Better patient understanding, easier lab color matching



Intelligent Automation

- Automatic and adaptive color and accuracy calibration
- No manual calibration required

Convenient:
removable & 180° reversible tip



Durable:
withstand 100 sterilization cycles



Oral-friendly:
improve patient comfort with a smooth,
rounded tip design



User-friendly tip

Powder-free
No heating required
LED structured-light imaging

Duct optimization

Enhanced anti-fogging for
improved precision

New body design

Firm body design with durability
Fresh look with ergonomic design
for easier using

Plug & scan

with only 1 power cable





AI Report - Smarter Diagnosis, Better Communication
Helios AI Health Report visually presents oral health conditions and treatment plans, streamlining doctor-patient communication.



Orthodontic Simulation

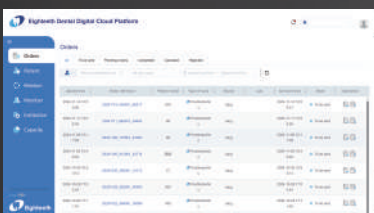
AI-powered automatic tooth alignment provides clear orthodontic before-and-after comparisons, helping doctors build patient confidence in treatment plans.

*This feature is only supported by NVIDIA graphics cards.



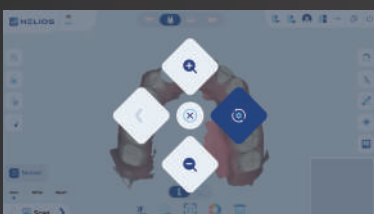
Model Builder

Add bases to 3D models directly within the software, boosting efficiency for orthodontists and making it easier to save and share models.



Cloud Storage

Enjoy 100GB of cloud storage for free, enabling easy order sharing through Cloud.



Air Mouse

Your scanner can also be a mouse to easily manage the software and rotate the 3D models.



Auto/Manual Bite



Enhanced
Implant Workflow



Shining Mode



Occlusion Analysis



Undercut
Detection



Texture Mapping



Tooth
Measurement



Margin Line
Drawing



Intraoral Camera



Software Update



Auto AI



Swap Upper
and Lower Jaw



Automatic
Cuff Detection



3D Viewer



APPList



Bite Refinement Preview

Parameters

Accuracy	Full-arch	16μm
	DOF	18mm
	Scan area	16×14mm(L)*3
		12×12mm(S)*1
Speed	FPS	30fps
Connectivity	Length	1.8m
	Type	USB3.0
Calibration	Accuracy calibration	Calibration-free
	Color calibration	Calibration-free
Advanced Mode	Remote control	✓
Date	Output format	STL/PLY/OBJ

Recommended System Requirements

Processor	Intel®Core™ 13th Gen i7-13700 (or equivalent)
Memory	32GB DDR4, frequency 2666 MHz (or better)
Hard Drive	1TB (or more) SSD
Graphics Card	NVIDIA® GeForce RTX™ 3060 (6GB VRAM)
Display	15.6” FHD (1920x1080) (or more)
USB Interface	USB 3.0 or higher, Voltage 4.9V-5.1V, Current >1A
Operation system	Windows 10/11

Helios 680

HELIOS 680, MORE THAN A SCANNER.

