

SDI

# P O L A

ADVANCED TOOTH  
WHITENING SYSTEM

# Talk to your patient about a whitening program that's right for them.



## In-Office Treatments

### Pola Rapid

6% hydrogen peroxide	3 × 15 minute applications
----------------------	----------------------------



## At Home Treatments

### Pola Day

6% hydrogen peroxide	1 or 2 × 30 minute applications or 1 × 45 minute application per day
----------------------	---



### Pola Night

Note: 1% of hydrogen peroxide equates to 2.77% of carbamide peroxide

10% carbamide peroxide	1 × 2 hours to overnight
------------------------	--------------------------

16% carbamide peroxide	90 minutes per day to overnight
------------------------	---------------------------------



### Pola for Aligners

10% carbamide peroxide	1 × 2 hours to overnight
------------------------	--------------------------



### Pola Light

6% hydrogen peroxide	2 × 10 or 2 × 15 minute treatments per day
----------------------	--




## On The Go

### Pola Luminate

6% hydrogen peroxide	2 × 30 minute applications per day
----------------------	------------------------------------





# In-Office





# Treatments



# Pola Rapid

Pola Rapid is the innovative in-office whitening treatment that safely whitens teeth in a 45 minute application time.

A unique 6% hydrogen peroxide formulation that releases active ingredients immediately.

#### Indications:

1. Whitening of discoloured vital teeth.
2. Whitening of discoloured non-vital teeth.

#### Superior handling and fast removal

Pola Rapid's higher viscosity gel enables faster application and removal due to its specially formulated non-stick attributes. Pola Rapid can be extruded quickly and easily and remains on teeth when applied.

#### Enhanced blue gel for faster application

Pola Rapid uses an advanced blue gel for ease of visibility and application. The easy to apply, non-stick gel enables faster application and removal.

#### Simple delivery and precise application

No mixing is required. The dual barrel syringe system mixes as the gel is applied directly to the tooth. The supplied brush tip helps deliver a smoother and more precise application.

#### Simple Procedure

No soft tissue isolation. With simple tooth preparation and quick contact time per application, it reduces chair time and improves productivity.

#### Built in desensitisers

Pola Rapid has unique built-in desensitising properties that inhibit post-operative sensitivity. Potassium nitrate, the key pain reducing ingredient, prevents sensitivity to provide a calming effect. The high water content of Pola Rapid ensures maximum comfort during and after treatment.

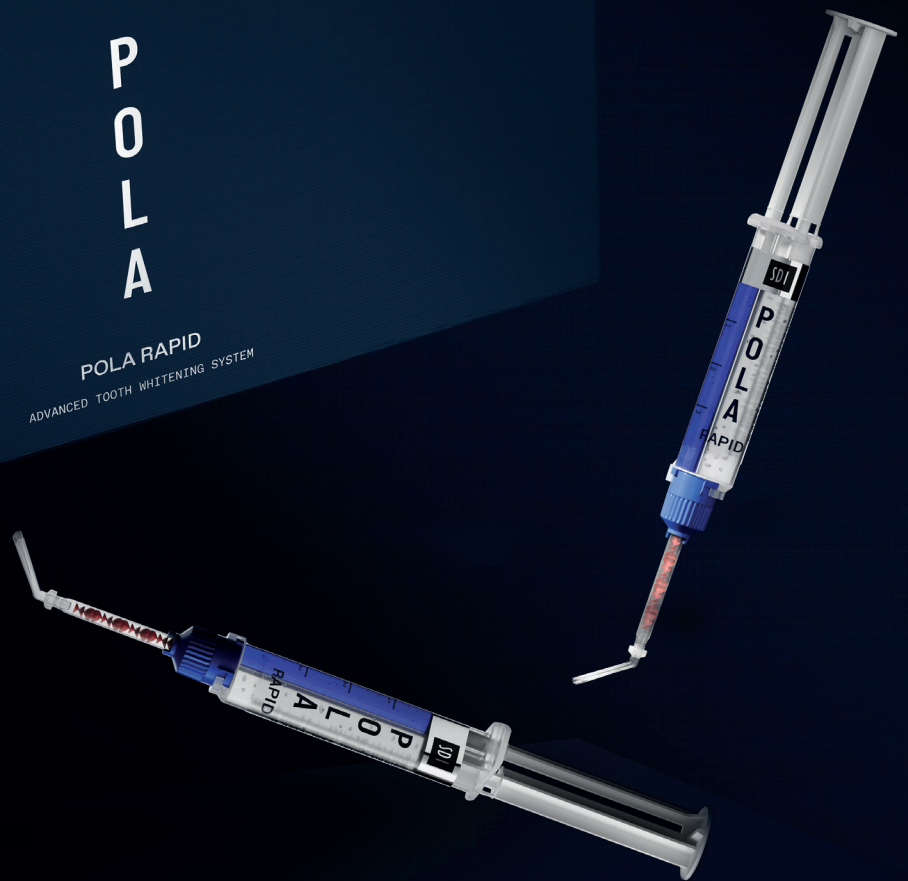
#### Fluoride releasing to strengthen teeth

Pola Rapid contains fluoride, helping to strengthen teeth and protect against sensitivity.

#### Can be used with or without a bleaching light

Pola Rapid can be used with or without a bleaching light, as it does not require heat to activate.







A close-up portrait of a woman with long, wavy blonde hair. She is wearing a dark blue, long-sleeved dress with a fine, sparkling texture. Her jewelry includes large, ornate diamond earrings and a matching diamond bracelet on her left wrist. She is resting her chin on her left hand and looking directly at the camera with a slight smile. The background is a solid, dark blue.

# At Home







# Pola Day

# Pola Night





### **Fluoride releasing**

Pola Day and Pola Night both contain fluoride, which helps strengthen the tooth to protect it against sensitivity.

### **Safe and convenient**

Pola Day and Pola Night's unique high water content formulation has a neutral pH to protect gums and teeth during treatment.

### **Effective whitening**

The desired whitening effect can be achieved in as little as 30 minutes per day or can be conveniently applied overnight while you sleep. There are a variety of different strengths of Pola Day and Pola Night that patients can use at home.

### **Pola Desensitising Technology (PDT)**

Pola Day and Pola Night contains Potassium Nitrate and Fluoride to assist with the prevention of post treatment sensitivity. Both Pola Day and Pola Night contain 20% water which prevents dehydration and helps reduce or eliminate sensitivity.

### **What's the difference between Pola Day and Pola Night?**

Pola Day consists of a range of hydrogen peroxide based take home gels specifically designed for achieving whitening results for patients with limited time in their schedule.

Pola Night contains carbamide peroxide for slow release of active oxygen.

Hydrogen peroxide formula means faster release of active ions which in turn means less tray wear time.

Pola Night is a range of carbamide peroxide based take home gels that deliver optimum whitening results to patients who have more sensitive teeth. Pola Night converts into hydrogen peroxide plus urea, which means there is a slower release of ions and hence more suited to overnight treatment.

Both ranges are available in a variety of different strengths with the lower concentrations geared towards more sensitive teeth.



# Pola For Aligners

## Straighten and brighten together

Pola whitening gel for aligners is perfectly formulated for use with orthodontic aligner trays.

Pola For Aligners can easily be used as a take home kit, ensuring a great patient experience by providing whiter, brighter smiles with no additional wear time.

**Pola For Aligners combines the same benefits of the award-winning Pola whitening formula**

- The greatest patient comfort in a whitening kit
- Contains potassium nitrate and fluoride to reduce sensitivity for long term use
- High viscosity gel ensures it can be easily and securely placed into the aligner tray, staying in place

**Available in a convenient 4 syringe kit  
– for take home, day or overnight wear**

- The Pola For Aligners system is available in Pola Night 10% carbamide peroxide gel that has been carefully selected as the ideal whitening agent to suit any aligner system. It enables patients to customise use between meals for just a couple of hours a day, to the convenience of overnight wear
- Clinical research has identified 10% carbamide peroxide as the Gold standard in teeth whitening, providing optimal whitening results whilst maintaining maximum patient safety and comfort\*



SAFE FOR OVERNIGHT WEAR



EASY TO USE



FLUORIDE RELEASING



PROFESSIONALLY USED AND RECOMMENDED





# Pola Light

## New advanced take home tooth whitening system with LED light technology

Enjoy a brighter, more confident smile in 5 days.

Pola Light is an advanced tooth whitening system that combines Pola's award-winning whitening formula, with an LED mouthpiece, for a faster whitening treatment.

- The Pola Light system combines with Pola Day.
- Fast acting, delivering whiter teeth in as little as 5 days.
- Formulated to safely remove long term stains.
- Fully rechargeable for future tooth whitening treatments.
- Remineralisation to strengthen the teeth.



Scan QR code  
for step by step  
instructions.



### FROM JUST 20 MINUTES A DAY

2 x 10 or 2 x 15 minute treatments per day.



### EASY TO USE

Portable, rechargeable and easy to wear with no cord attached to mouthpiece. Pola LED mouthpiece is a dual arch and a universal size.



### WHITER TEETH IN FIVE DAYS

5 day treatment time.

No chair time or custom trays required, saving time for both patient and dentist.



### PROFESSIONALLY USED AND RECOMMENDED

Pola is a professional tooth whitening system that is trusted and recommended by dentists to achieve a safer, quicker and whiter smile.

The high viscosity, neutral pH tooth whitening gels ensure the greatest patient comfort in a take home kit.

The unique blend of soothers, conditioners and high water content assist in reducing sensitivity.







# On the Go





# Treatments



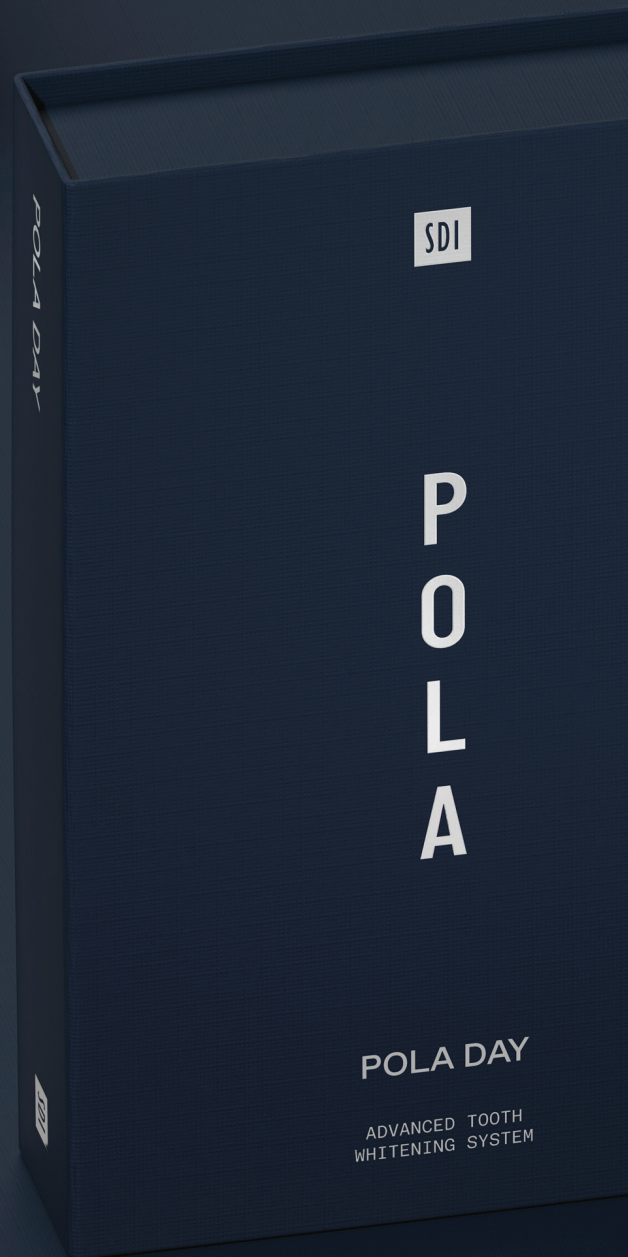
# Pola Luminare



Recharge the brightness with Pola Luminare! With 6% hydrogen peroxide, Pola Luminare is our highest strength brush on tooth whitener. It is designed to easily fit into your patient's pocket or bag to be used on the go! This is a great touch up tool to maintain an already white smile.











POLA DAY

SDI

POLA

POLA  
ADVANCED TOOTH WHITENING SYSTEM

SDI

POLA

POLA RAPID  
ADVANCED TOOTH WHITENING SYSTEM

TOOTH BLEACH GEL  
ONE PATIENT KIT  
KEEP REFRIGERATED  
6% HYDROGEN PEROXIDE

POLA RAPID



# Pola Whitening Stand

## Simple design

The Pola Whitening Stand comes in a smart and slimline design that is compatible with the SDI Rarii Xpert curing light.

## Wide range of movements and adjustments

The Pola Whitening Stand has five rotation points, allowing you to adjust the stand up to 360° to achieve the exact position you require.

## Versatile

The stand can be positioned beside or behind the patient, depending on the practice requirements.

## Equipped with wheels

The stand is equipped with wheels allowing complete freedom of movement and control from room to room.

## Lightweight, cordless and compact

Moving and positioning the stand is simple due to the lightweight and cordless design.

The compact stand is easy to clean and can easily be stored away when not in use.

## Stability of the system

The stand brakes ensure the base remains steadily in place while in use.



Scan QR code  
for step by step  
instructions.



## CLINICAL CASE STUDIES

---



**Dr Vijay Vadher**  
UK

### Pola Night 16%



**Dr Linda Greenwall**  
UK

### Pola Night 10% CP for Aligners



**Dr. David Carralero Plaza**  
Spain

### Pola Day 6%



**Dr. Mohamed  
Abdulmonem Abdulsalam**  
Egypt

### Pola Light 6%





F





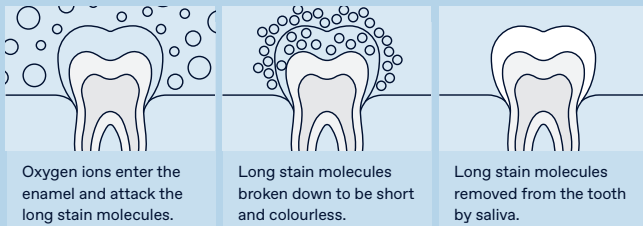
# A

## What causes tooth discolouration?

Everyone's teeth are unique, therefore they discolour and stain in different ways. The discolouration or staining of a tooth is typically caused by strong coloured foods and liquids such as coffee, curry or from smoking cigarettes.

## How does tooth whitening work?

When a whitening product is applied to the tooth, it breaks down into water and oxygen ions. The oxygen ions enter the enamel and attack the long stain molecules to effectively break them down to be short and colourless. These short and colourless molecules are then naturally removed from the tooth by saliva. The intensity of whitening is related to the number of ions available and the length of time they are on the tooth.



## How long does it take to whiten a patient's teeth?

With In Clinic whitening, results may be obtained in just 30 minutes treatment time. Using a take home whitening system may take approximately 5-14 days.

# Q

## How long will the whitening treatment last?

Teeth whitening is an irreversible dental procedure and the time frame in which the treatment will last is dependent on the individual person and their oral habits. Teeth whitening can be repeated from 6-12 months for both in-office and take home procedures.

## How does whitening affect restorations and veneers?

Whitening will remove any existing stains on the restorations and veneers, but will not affect the original shade.

## Are there any side effects?

Please consult the instructions for use. The vast majority of people will experience no side effects. However, some will experience temporary sensitivity (dull or sharp, sensitivity to hot or cold). This will subside after several hours and won't leave any residual problems. The wear times can be shortened or made less frequent. The patient should abstain from carbonated drinks, citrus fruits and beverages to avoid sensitivity.

## Is teeth whitening safe during pregnancy?

It is not recommended to use teeth whitening products during pregnancy.



# Pola In-Office

POLA RAPID	
Pola Rapid 6% 1 Syringe Kit 1 × 2.8 mL syringe of Pola Rapid	7700510
Pola Rapid 6% 3 Syringe Kit 3 × 2.8 mL syringes of Pola Rapid	7700511

POLA WHITENING STAND	
1 x Stand 1 x mount for SDI Radii Plus 1 x mount for SDI Radii Xpert Accessories	7700989

# Pola At Home

Please note: each pack includes accessories.  
CP: Carbamide Peroxide   HP: Hydrogen Peroxide

POLA DAY	
Pola Day Mini Kit 4 × 1.3g (6% HP)	7700357
Pola Day 10 × 1.3g Syringe Kit (6% HP)	7700359
Pola Day 50 × 1.3g Bulk Kit (6% HP)	7700361
Pola Day 50 × 3g Dispenser Kit (6% HP)	7700079

POLA NIGHT	
Pola Night Mini Kit 4 × 1.3g (10% CP) (16% CP)	7700369 7700375
Pola Night 10 × 1.3g Syringe Kit (10% CP) (16% CP)	7700371 7700377
Pola Night 50 × 1.3g Bulk Kit (10% CP) (16% CP)	7700373 7700379
Pola Night 50 × 3g Dispenser Kit (16% CP)	7700085

POLA FOR ALIGNERS	
Pola For Aligners (10% CP) 4 × 3g syringes	7700556

TRAY CASES	
Tray Cases 5 Pack 5 x Tray Cases	7750008

POLA LIGHT	
Pola Light (6% HP) 4 × 3g Pola Day Syringes	7700985

TRAY MATERIAL	
20 Tray Material 20 Pieces	7750005

POLA LIGHT DISPLAY STAND	
1 x Stand	7700979

SPACER RESIN	
2 Syringe Kit 2 × 1g Spacer Resin Syringes	7700012

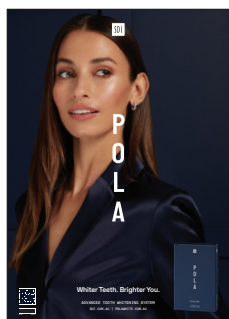
GINGIVAL BARRIER	
Gingival Barrier 2 Syringe Refill 2 × 1g Gingival Barrier Syringes Accessories	7750006

# Pola On The Go

POLA LUMINATE	
Pola Luminate 1 × 5.5mL	7700092

# Complimentary marketing material

Marketing material to assist in promoting whitening to patients.



**Poster Pola Day**  
Reorder M110050



**Poster Pola Night**  
Reorder M110051



**Poster Pola Rapid**  
Reorder M110052



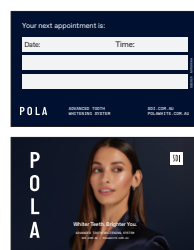
**Pola Before & After Stand**  
Reorder M110057



**Pola Patient Handout Stand**  
Reorder M110059



**Pola Patient Handout**  
Reorder M101055



**Pola Appointment Card**  
Reorder M110056



**Pola Window Sticker**  
Reorder M110058



**Pola Light Patient Handout**  
Reorder M101058



**Pola Thank You Card**  
Reorder M110063



**Pola Statement Stuffer**  
Reorder M110060



**Pola Waiting Room USB Video**  
Reorder M100245



**Pola Carry Bag**  
Reorder M100331



**Pola Carry Bag**  
Reorder M100332



**Customisable Marketing Material**  
More customisable marketing material is available via download. Visit [www.sdi.com.au](http://www.sdi.com.au)



SDI

SDI Limited is primarily involved in the research and development, manufacturing and marketing of specialist dental materials. SDI's products are a combination of innovation and excellence to provide the ideal restorative materials for the dental profession.

#### MADE IN AUSTRALIA

by SDI Limited  
3-15 Brunsdon Street,  
Bayswater, Victoria 3153  
Australia  
[www.sdi.com.au](http://www.sdi.com.au)

---

AUSTRALIA 1 800 337 003  
AUSTRIA 00800 022 55 734  
BRAZIL 0800 770 1735  
FRANCE 00800 022 55 734  
GERMANY 0800 100 5759  
ITALY 00800 022 55 734  
NEW ZEALAND 0800 808 855  
SPAIN 00800 022 55 734  
UK 00800 022 55 734  
USA & CANADA 1 800 228 5166

---



INSTAGRAM  
[@pola\\_smile](https://www.instagram.com/pola_smile)



FACEBOOK  
[polasmiletoothwhitening](https://www.facebook.com/polasmiletoothwhitening)

For more information visit  
**[polawhite.com.au](http://polawhite.com.au)**



05-2025

M101051 B